

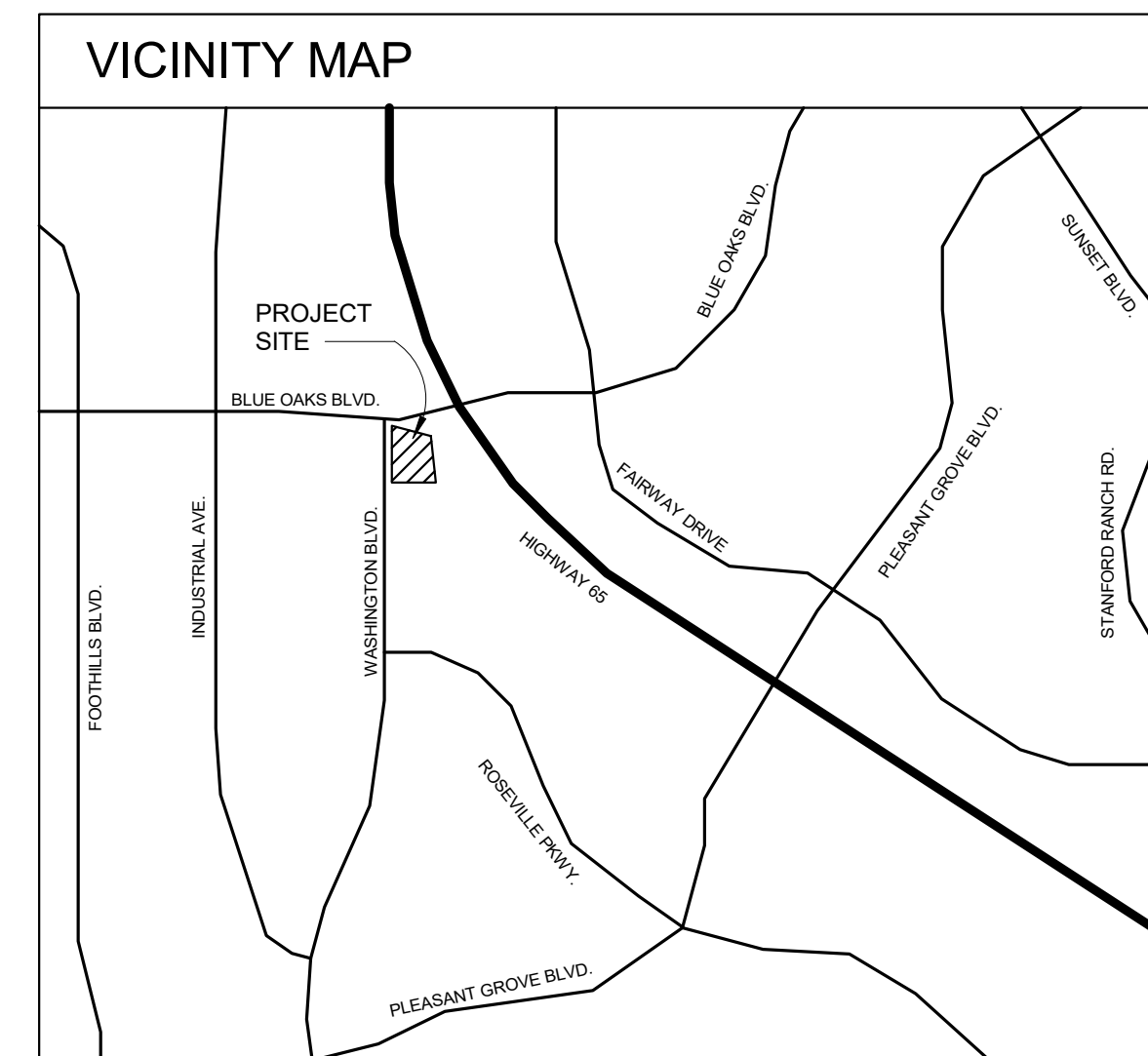
FREEDOM POINT PARCEL 49

MAJOR PROJECT PERMIT FOR PARCELS 1, 2 & 5 STAGE 1 AND STAGE 2 CONCURRENTLY



REV	DATE	DESCRIPTION
2	06/05/2017	2ND PLANNING SUBMISSION
1	02/17/2017	1ST PLANNING SUBMISSION

OWNER / CONSULTANT INDEX	
DEVELOPER:	COVENANT GROUP 2044 CALIFORNIA AVE. CORONA, CA 92881 P.O.C. : JULIE MARGETICH email : margetich@pacifcdentalservices.com TELE : (951) 582-5745 FAX : (714) 388-3951
ARCHITECT:	BORGES ARCHITECTURAL GROUP, INC. 1478 STONE POINT DRIVE, SUITE 350 ROSEVILLE, CA 95661 P.O.C. : NEAL DERIDDER email : neal@borgesarch.com TELE : (916) 782-7200 FAX : (916) 773-3037
CIVIL:	TSD ENGINEERING, INC. 31 NATOMA STREET, SUITE #160 FOLSOM, CA 95630 P.O.C. : CASEY FEICKERT email : cfeickert@tsdeng.com TELE : (916) 671-9716 FAX : (916) 608-0701
LANDSCAPE:	FUHRMAN LEAMY LAND GROUP 2140 PROFESSIONAL DRIVE, SUITE 115 ROSEVILLE, CA 95661 P.O.C. : STEVEN FUHRMAN email : stevef@flandgroup.com TELE : (916) 783-5263



SHEET INDEX/REVISION HISTORY	
	REVISION HISTORY
	02.17.17 PLANNING SUBMIT.
ARCHITECTURAL	
001	COVER SHEET
BUILDING A:	
103-A	FLOOR PLAN
108-A	ROOF PLAN & SECTION
201-A	EXTERIOR ELEVATIONS
BUILDING C:	
103-C	FLOOR PLAN
108-C	ROOF PLAN & SECTION
201-C	EXTERIOR ELEVATIONS
BUILDING D:	
103-D	FLOOR PLAN
108-D	ROOF PLAN & SECTION
201-D	EXTERIOR ELEVATIONS
BUILDING E:	
103-E	FLOOR PLAN
108-E	ROOF PLAN & SECTION
201-E	EXTERIOR ELEVATIONS

FREEDOM POINT PARCEL 49 - MPP FOR PARCELS 1, 2 & 5

4180 THRIVE DRIVE

STAMP

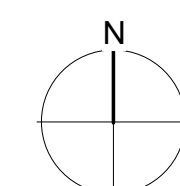
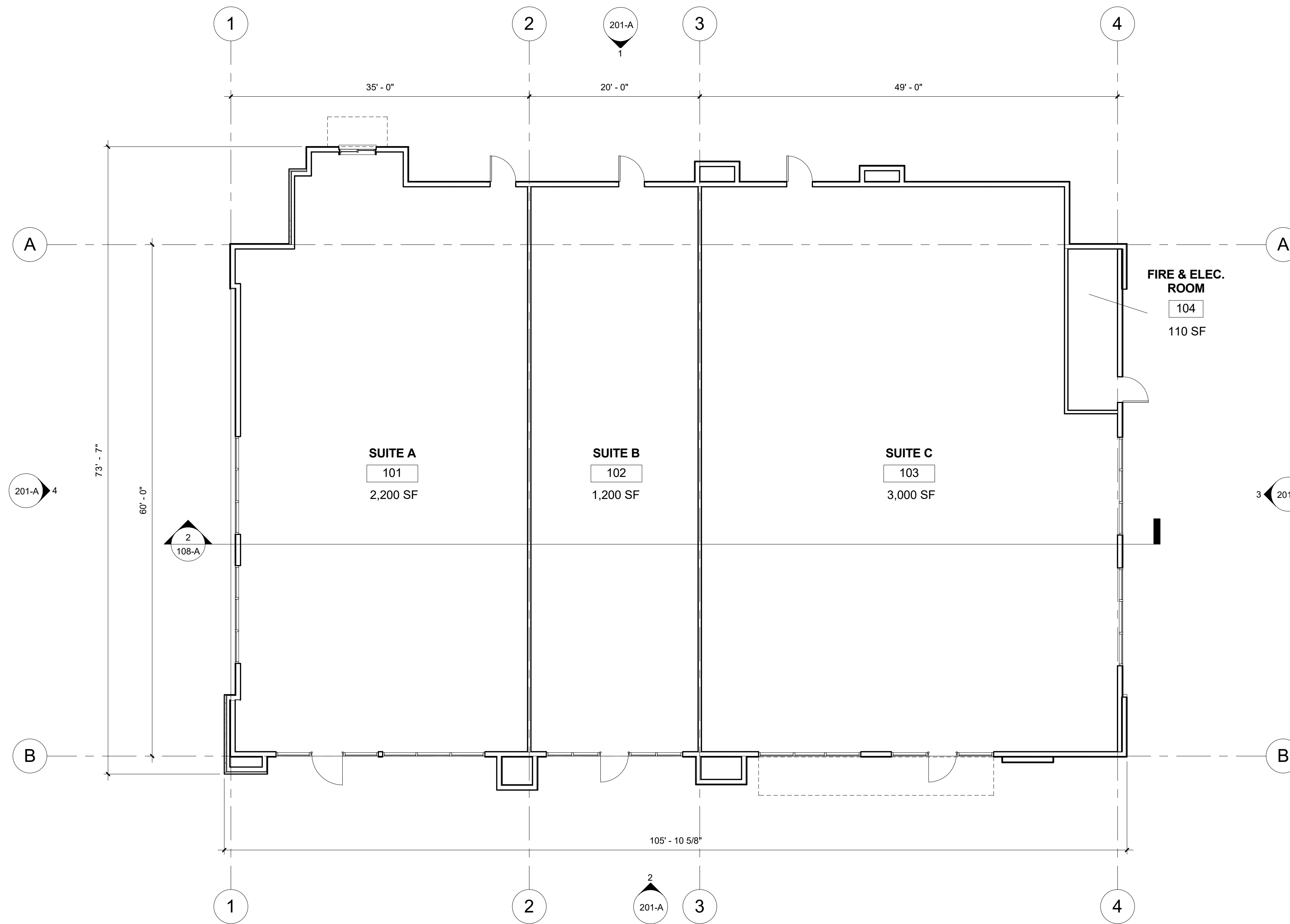
DRAWN BY: Author PROJECT NO.: 17002
CHECK BY: Checker ISSUE DATE: 02/17/17

SHEET TITLE

COVER SHEET

SHEET NO.

001

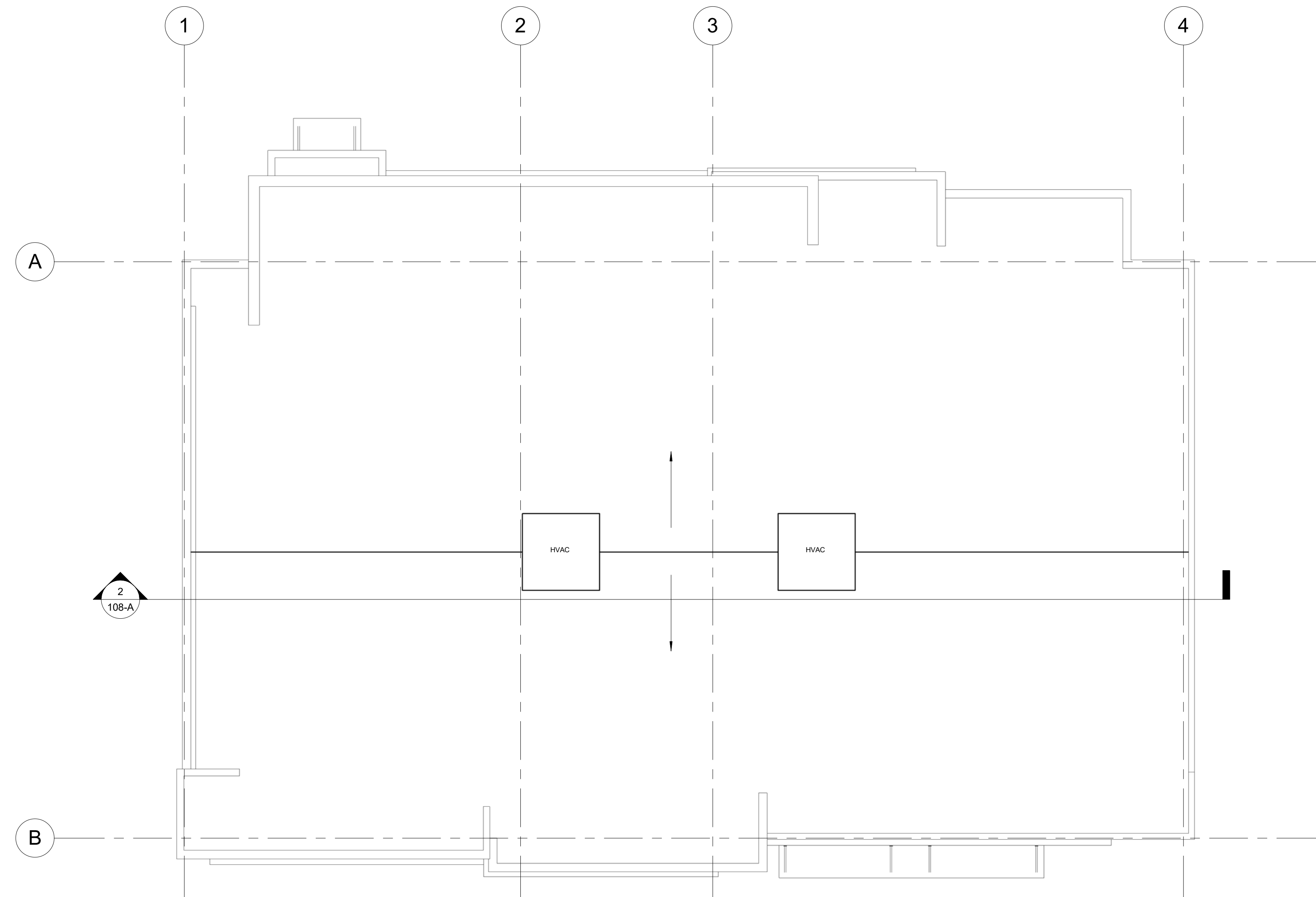


FREEDOM POINT PARCEL 49 - BUILDING A FLOOR PLAN

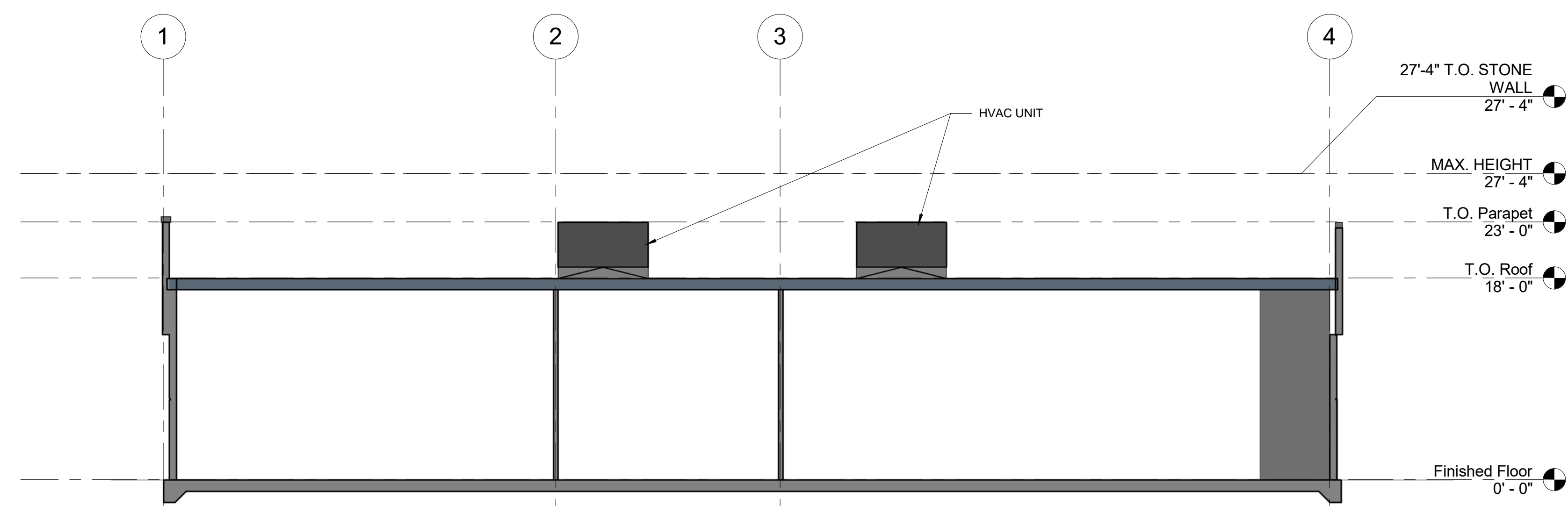
SCALE: 1/8" = 1'-0"

103-A

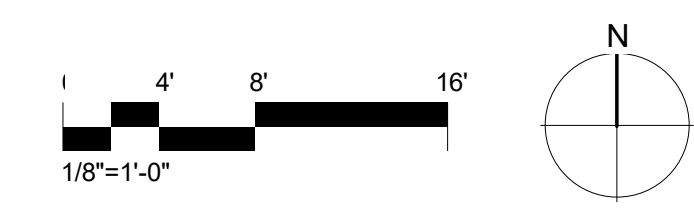




1 ROOF PLAN
1/8" = 1'-0"



2 SECTION
1/8" = 1'-0"

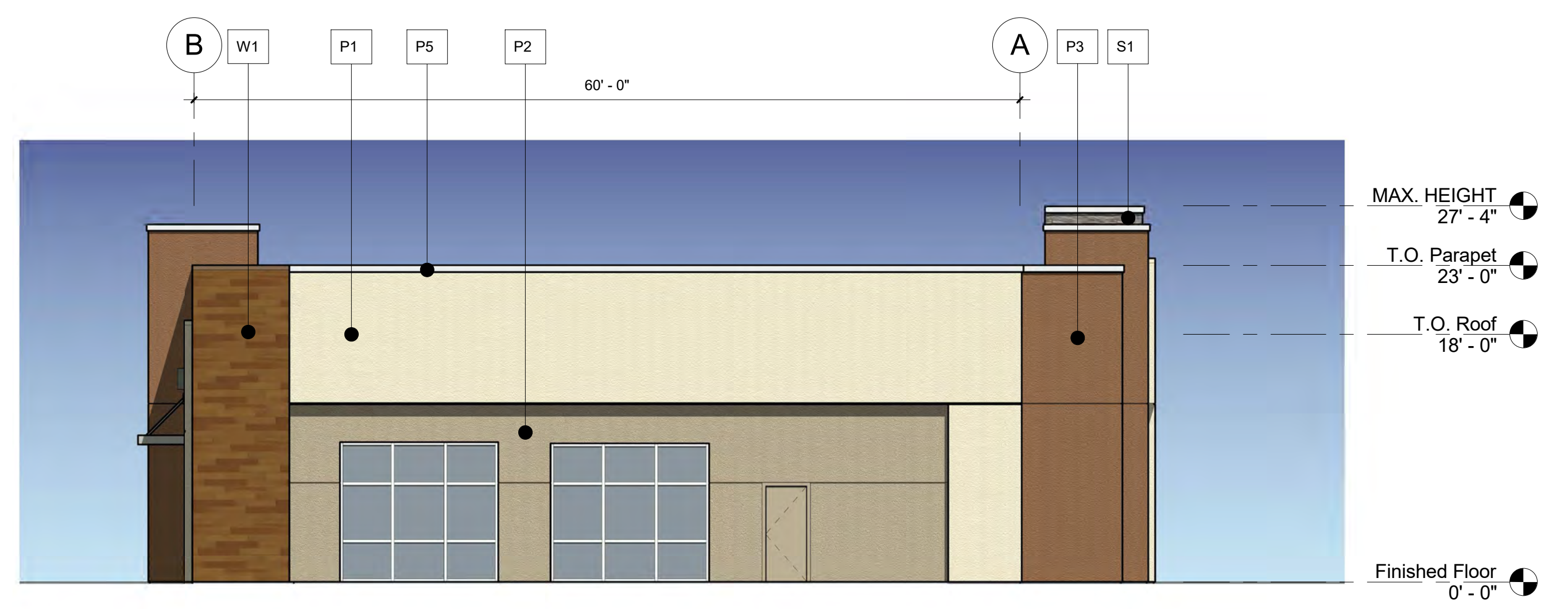


FREEDOM POINT PARCEL 49 - BUILDING A ROOF PLAN & SECTION

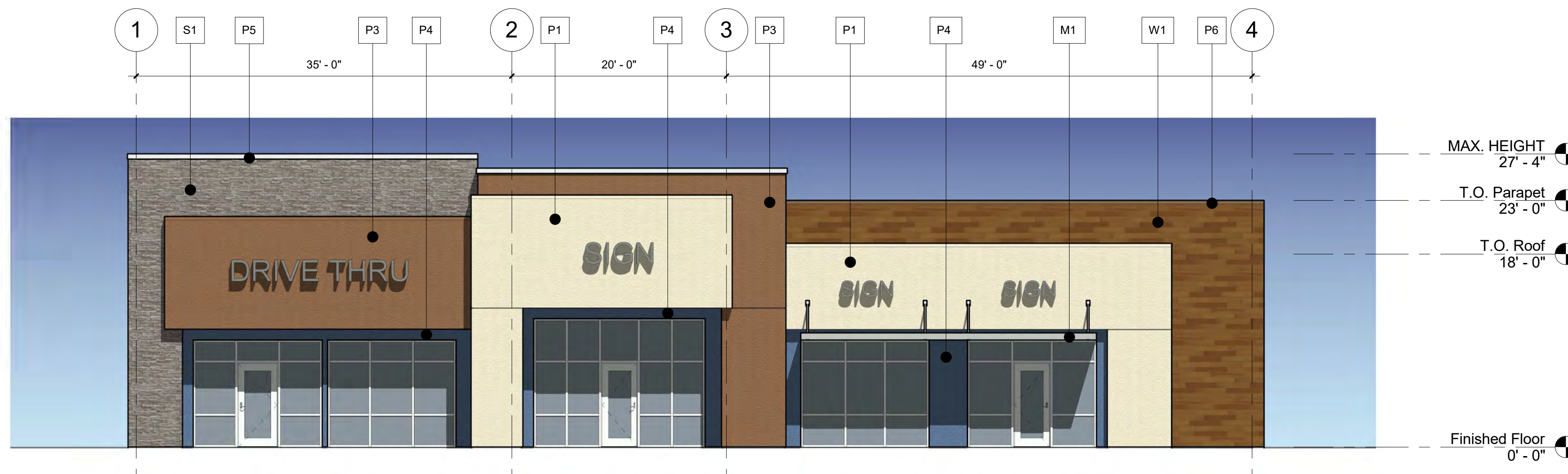
108-A **Borges** ARCHITECTURAL GROUP



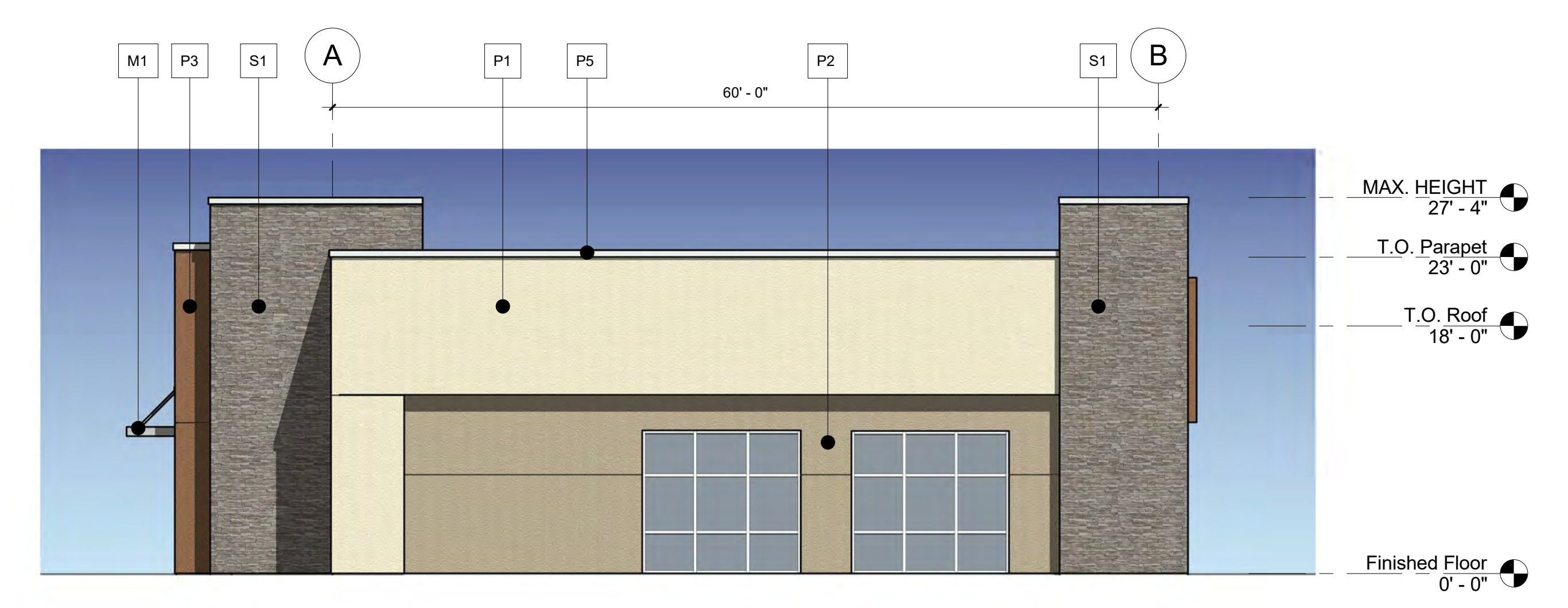
1 NORTH ELEVATION
1/8" = 1'-0"



3 EAST ELEVATION
1/8" = 1'-0"



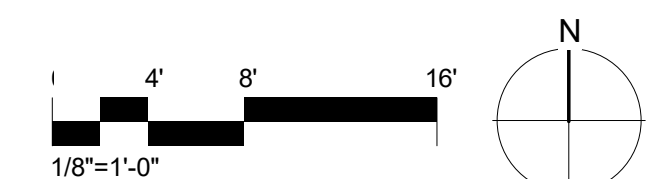
2 SOUTH ELEVATION
1/8" = 1'-0"



4 WEST ELEVATION
1/8" = 1'-0"

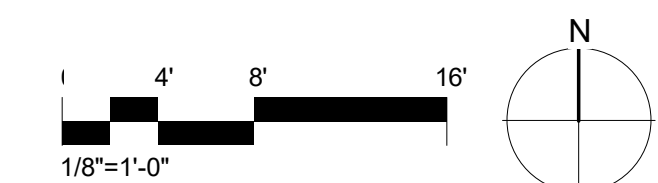
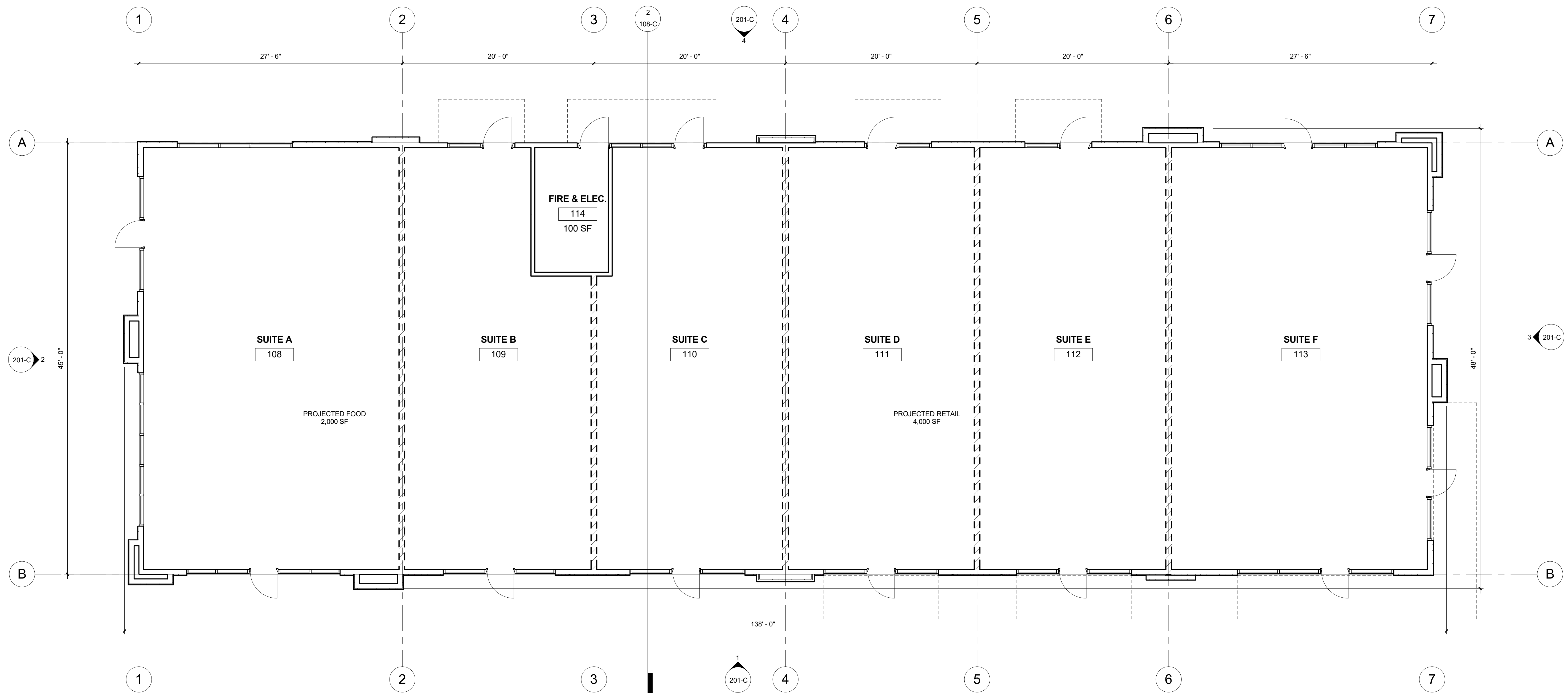
MATERIAL LEGEND

P1	BENJAMIN MOORE NATURAL CREAM #OC-14	M1	METAL AWNING
P2	SHERWIN WILLIAMS QUIVER TAN #SW6151	W1	PORCELAIN TILE ELEGANZA ANTICHO
P3	SHERWIN WILLIAMS UMBER RUST #SW9100	S1	EL DORADO STONE
P4	SHERWIN WILLIAMS LUXE BLUE		
P5	COPING COLOR MATTE GRAY		
P6	COPING COLOR BROWN		



FREEDOM POINT PARCEL 49 - BUILDING A EXTERIOR ELEVATIONS

201-A
Borges ARCHITECTURAL GROUP

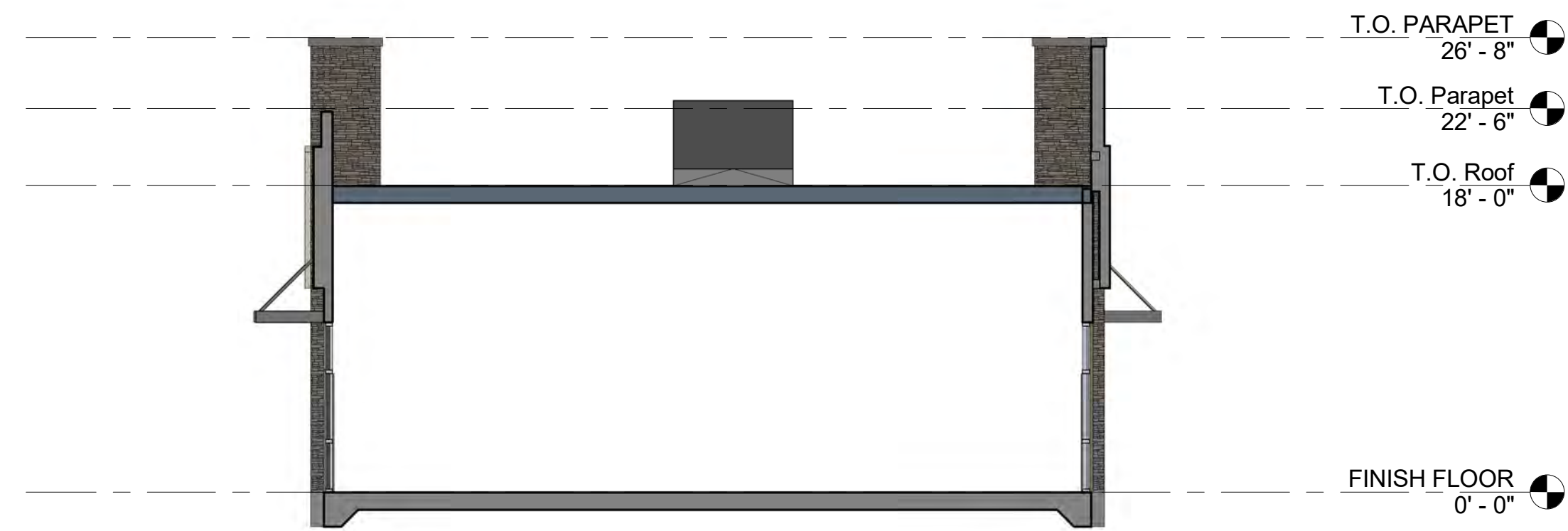


FREEDOM POINT PARCEL 49 - BUILDING C FLOOR PLAN

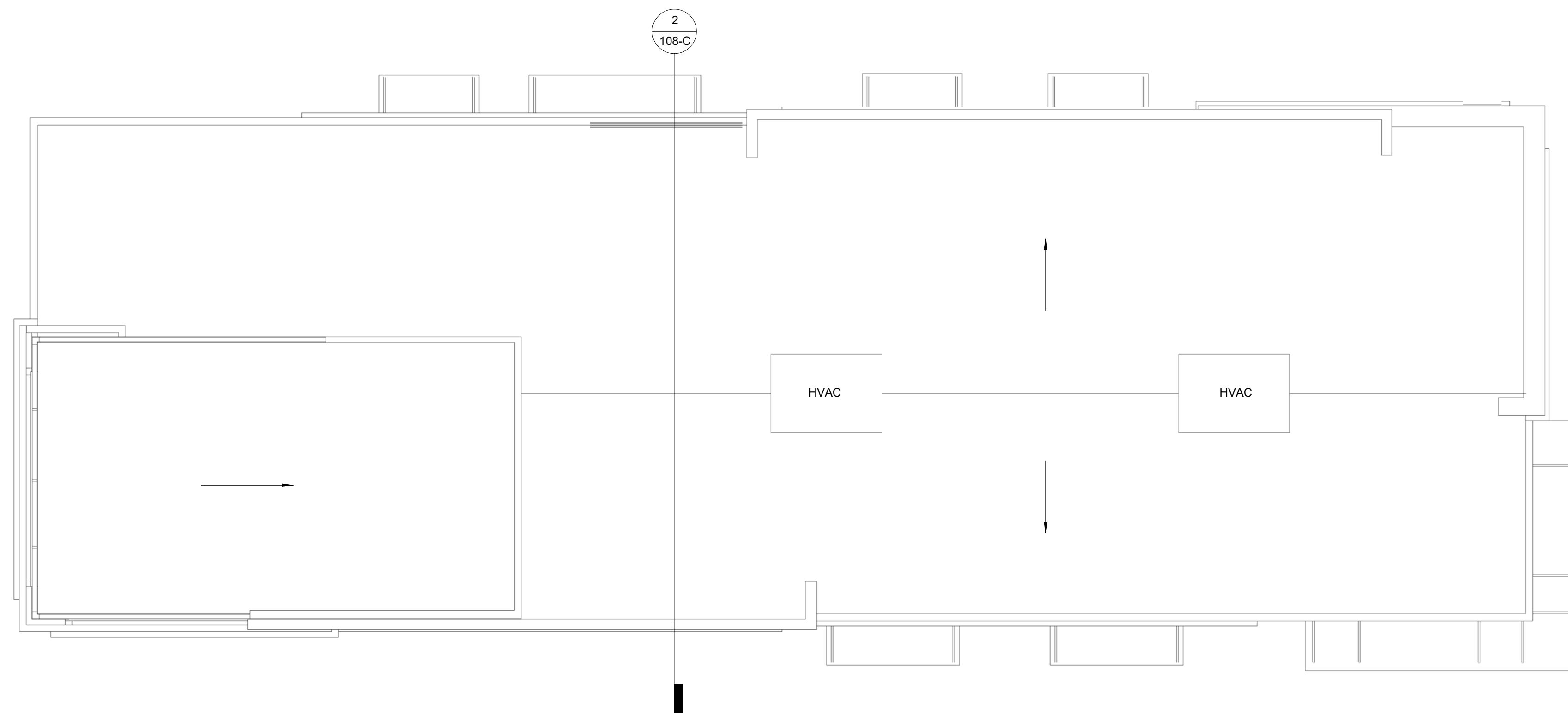
103-C **Borges** ARCHITECTURAL GROUP

4201 THRIVE DRIVE 17002 02/17/17

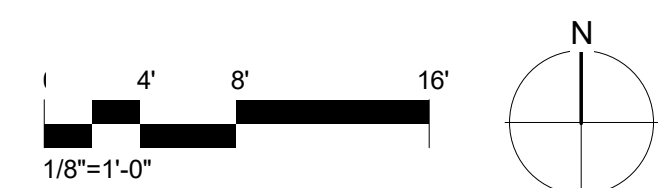
1478 STONE POINT DRIVE SUITE 350 ROSEVILLE, CA 95661 T | 916 782 7200 borgesarch.com



2 SECTION
1/8" = 1'-0"



1 ROOF PLAN
1/8" = 1'-0"





4 WEST ELEVATION
1/8" = 1'-0"



2 SOUTH ELEVATION
1/8" = 1'-0"



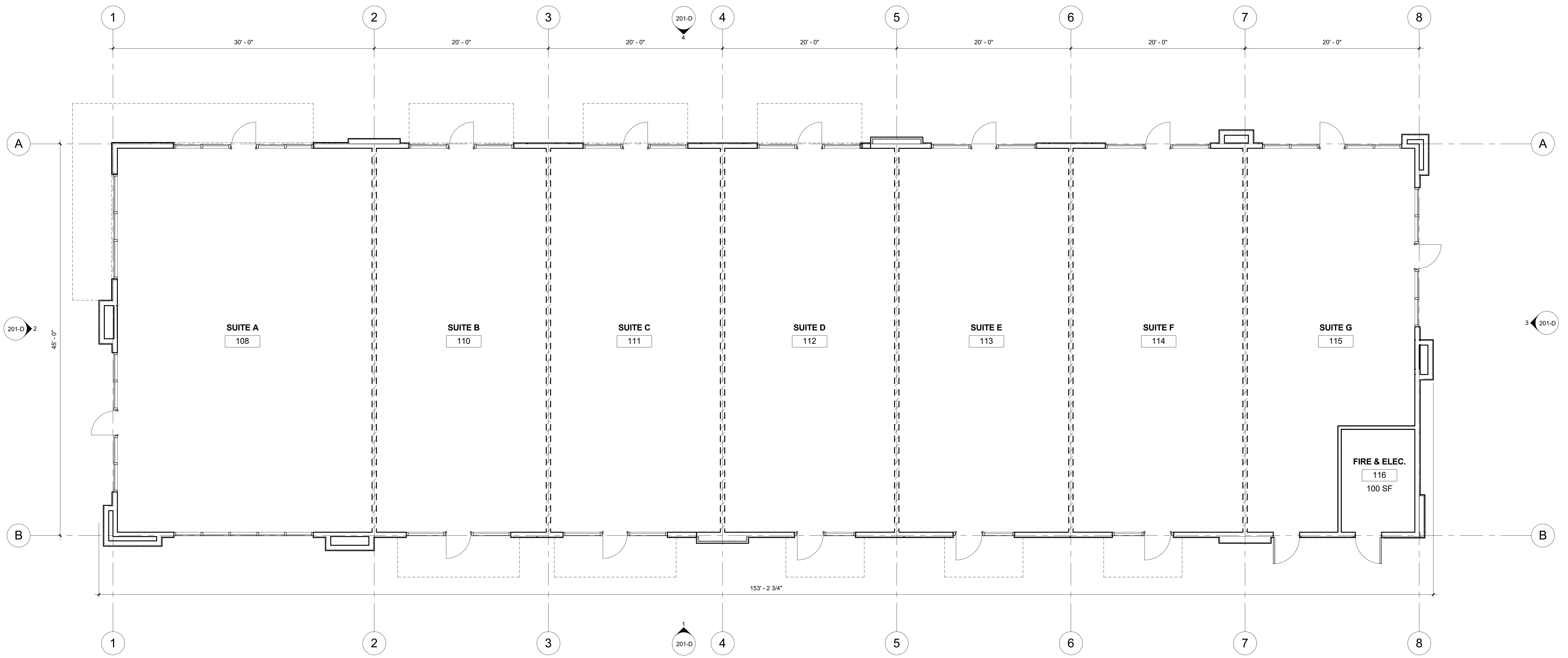
3 NORTH ELEVATION
1/8" = 1'-0"



1 EAST ELEVATION
1/8" = 1'-0"

MATERIAL LEGEND

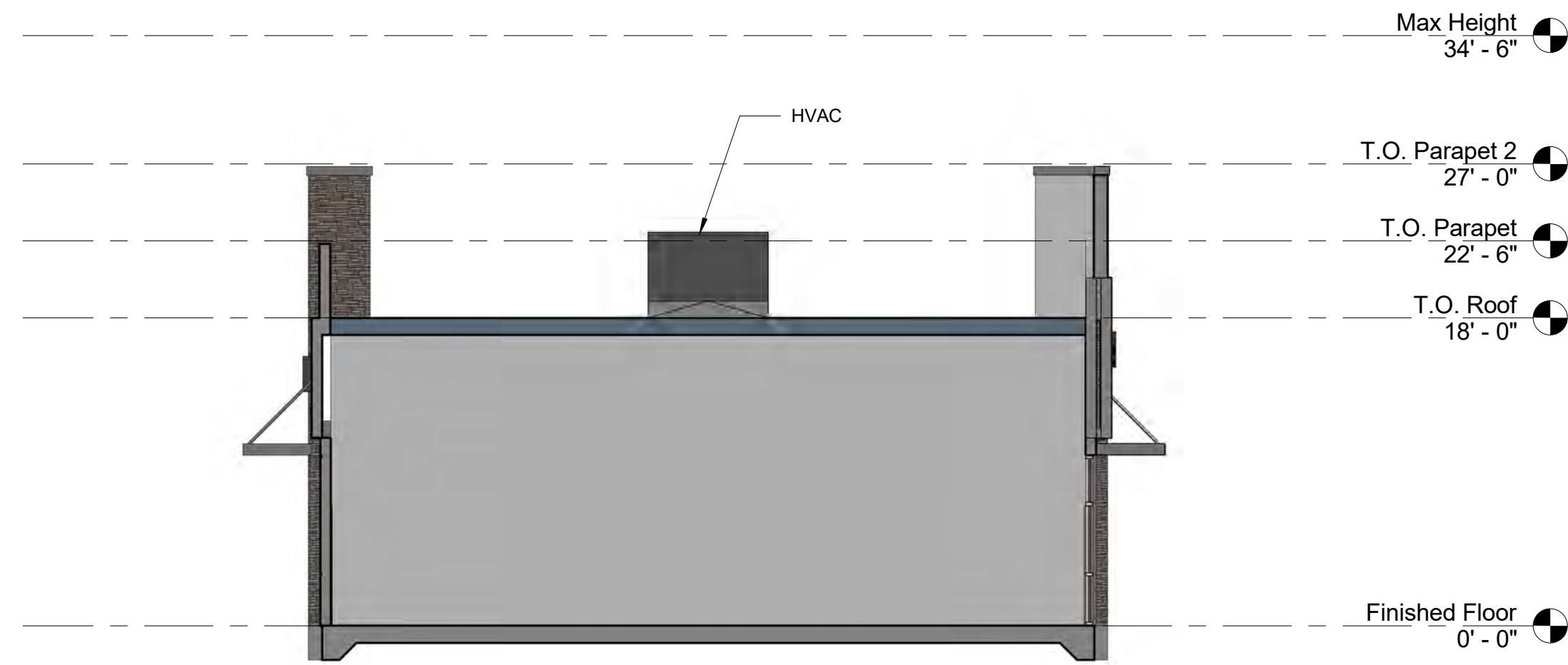
P1	BENJAMIN MOORE NATURAL CREAM	M1	METAL
P2	SHERWIN WILLIAMS QUIVER TAN	W1	PORCELAIN TILE ELEGANZA ANTICHO
P3	SHERWIN WILLIAMS UMBER RUST	S1	EL DORADO STONE
P4	SHERWIN WILLIAMS LUXE BLUE		
P5	COPING COLOR		
P6	COPING COLOR		



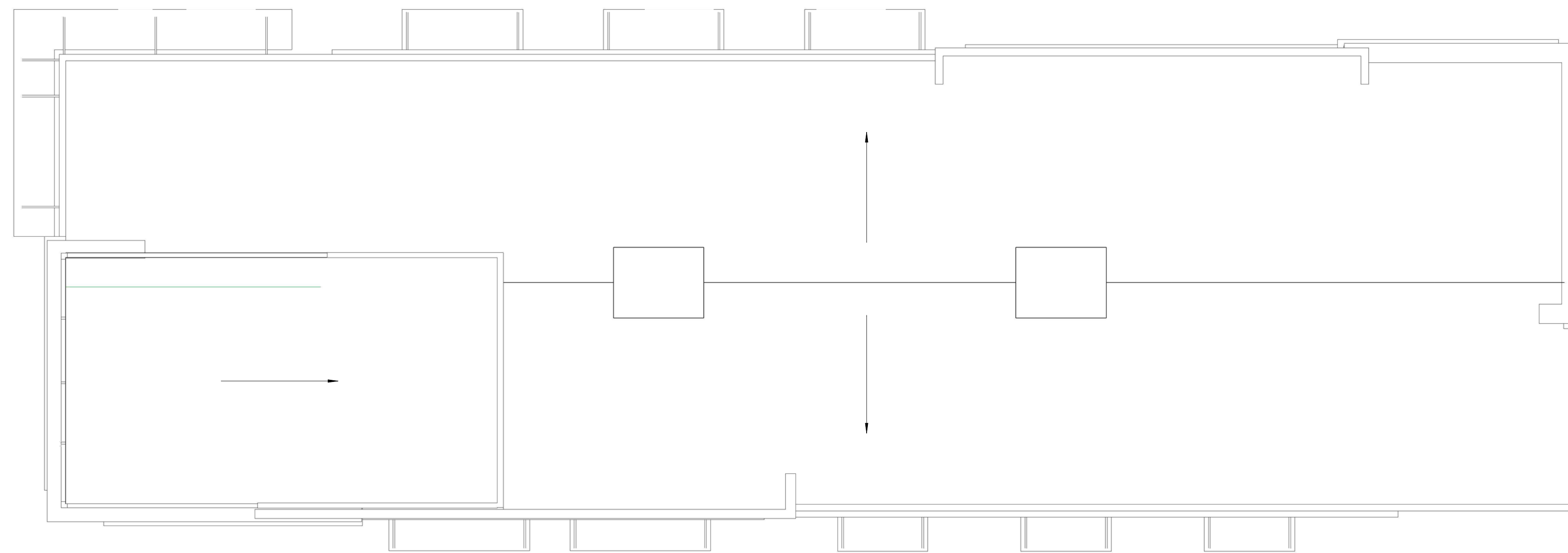
FREEDOM POINT PARCEL 49 - BUILDING D FLOOR PLAN

103-D

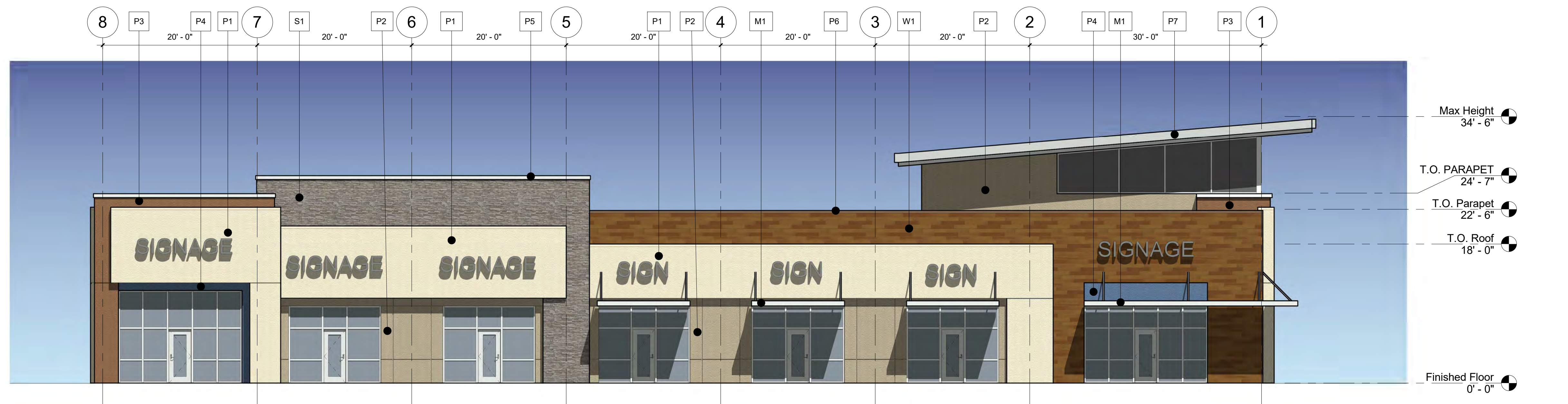




2 SECTION
1/8" = 1'-0"



1 ROOF PLAN
1/8" = 1'-0"



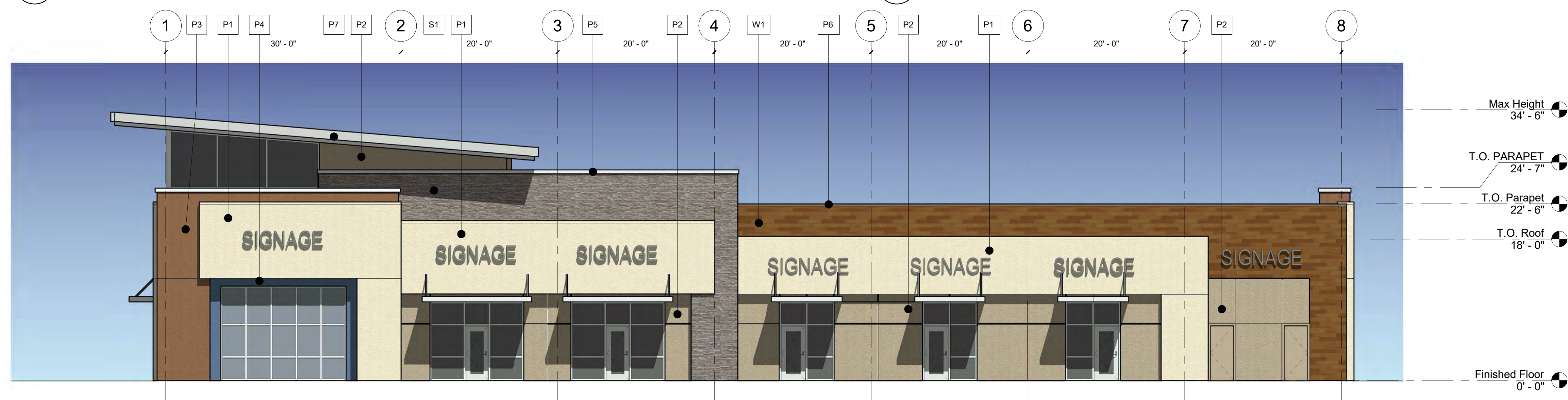
4 COLORED NORTH ELEVATION
1/8" = 1'-0"



2 COLORED WEST ELEVATION
1/8" = 1'-0"



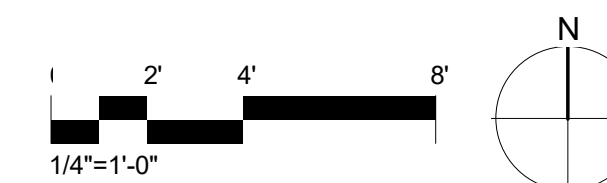
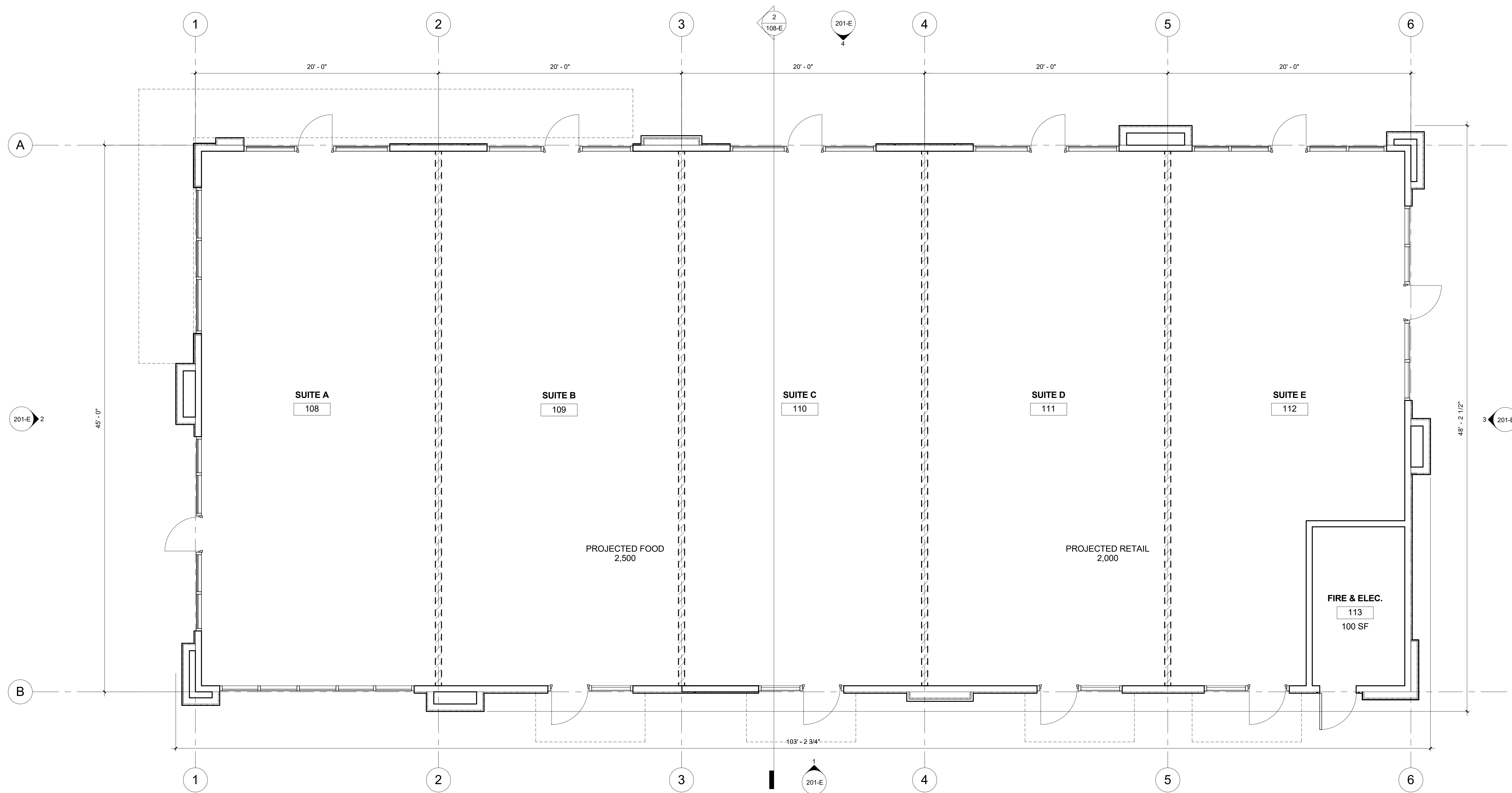
3 COLORED EAST ELEVATION
1/8" = 1'-0"



1 COLORED SOUTH ELEVATION
1/8" = 1'-0"

MATERIAL LEGEND

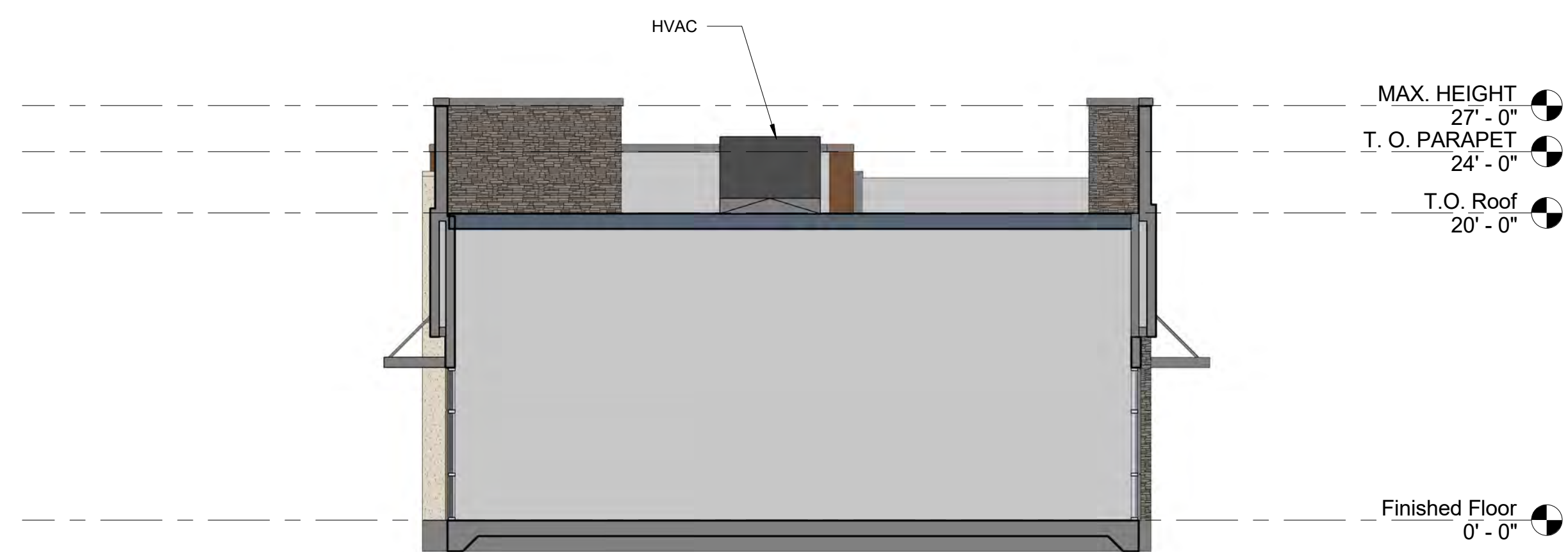
P1	BENJAMIN MOORE NATURAL CREAM	M1	METAL
P2	SHERWIN WILLIAMS QUIVER TAN	W1	PORCELAIN TILE ELEGANZA ANTICHO
P3	SHERWIN WILLIAMS UMBER RUST	S1	EL DORADO STONE
P4	SHERWIN WILLIAMS LUXE BLUE		
P5	COPING COLOR		
P6	COPING COLOR		



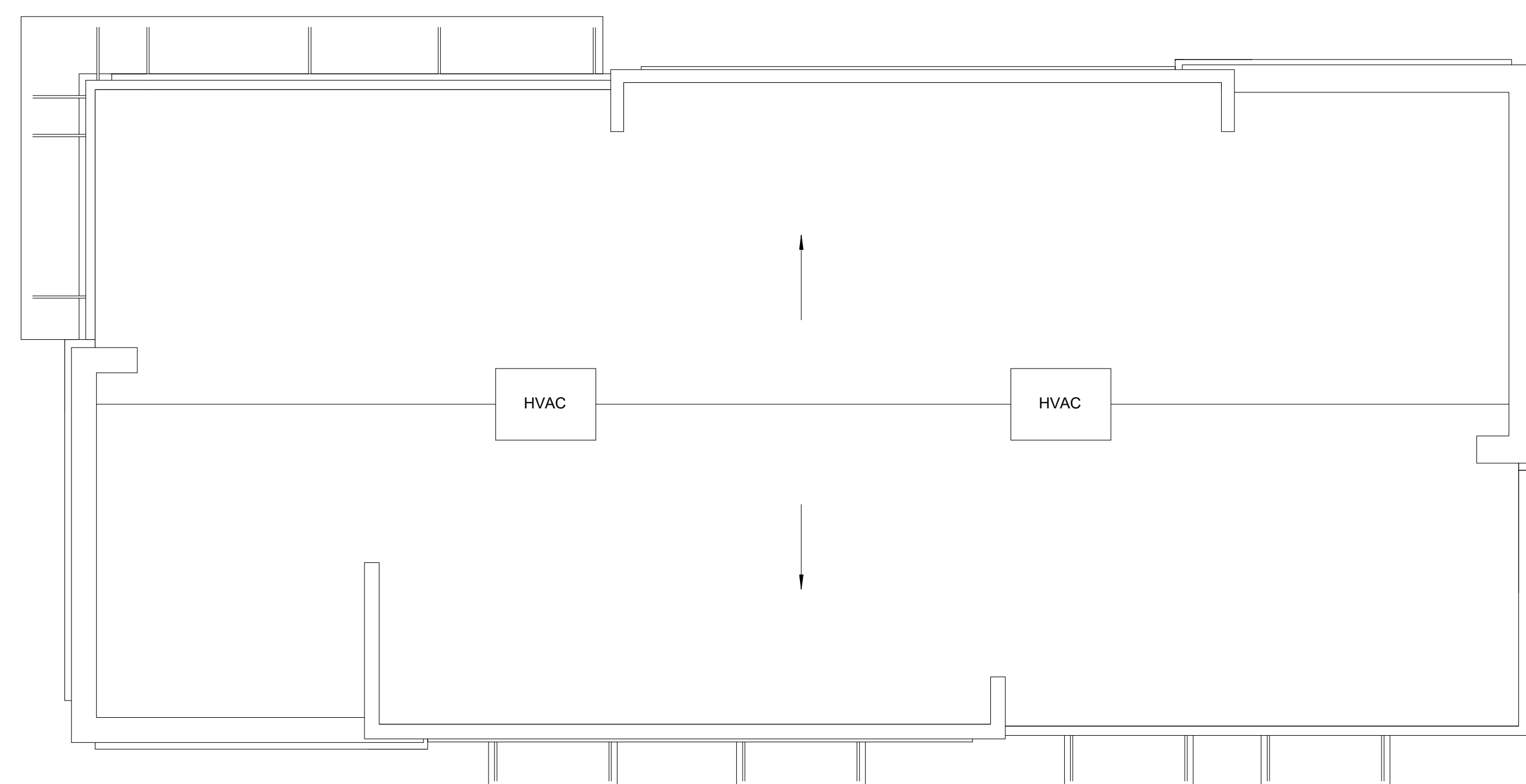
FREEDOM POINT PARCEL 49 - BUILDING E FLOOR PLAN

103-E

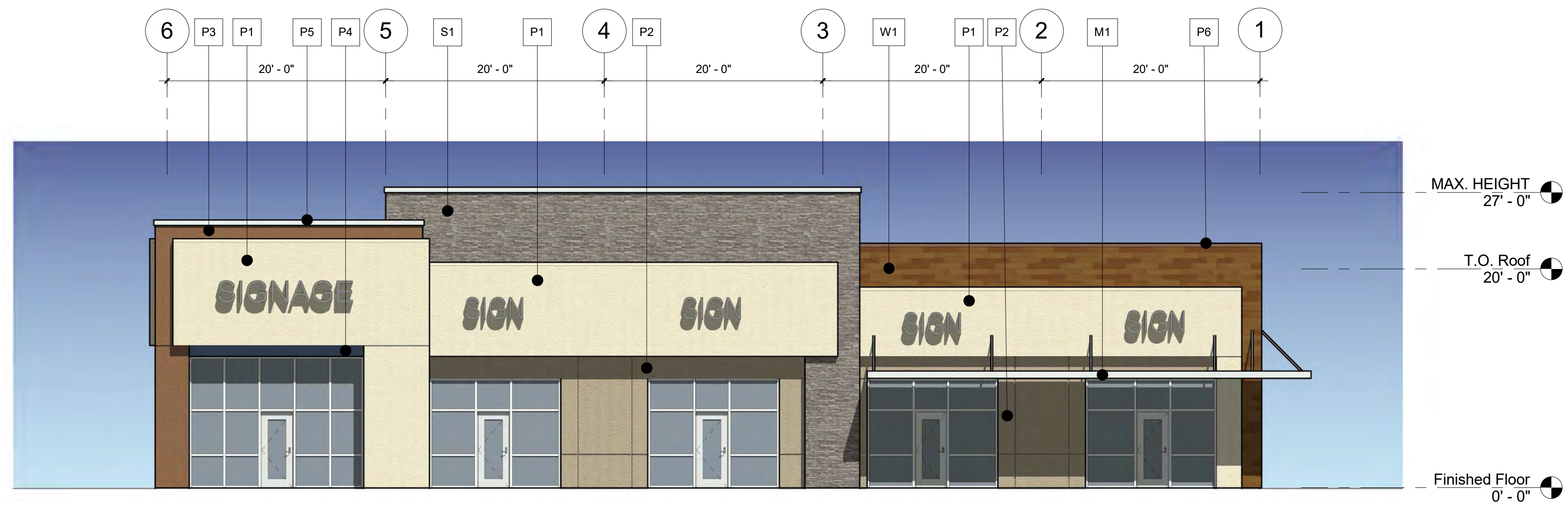




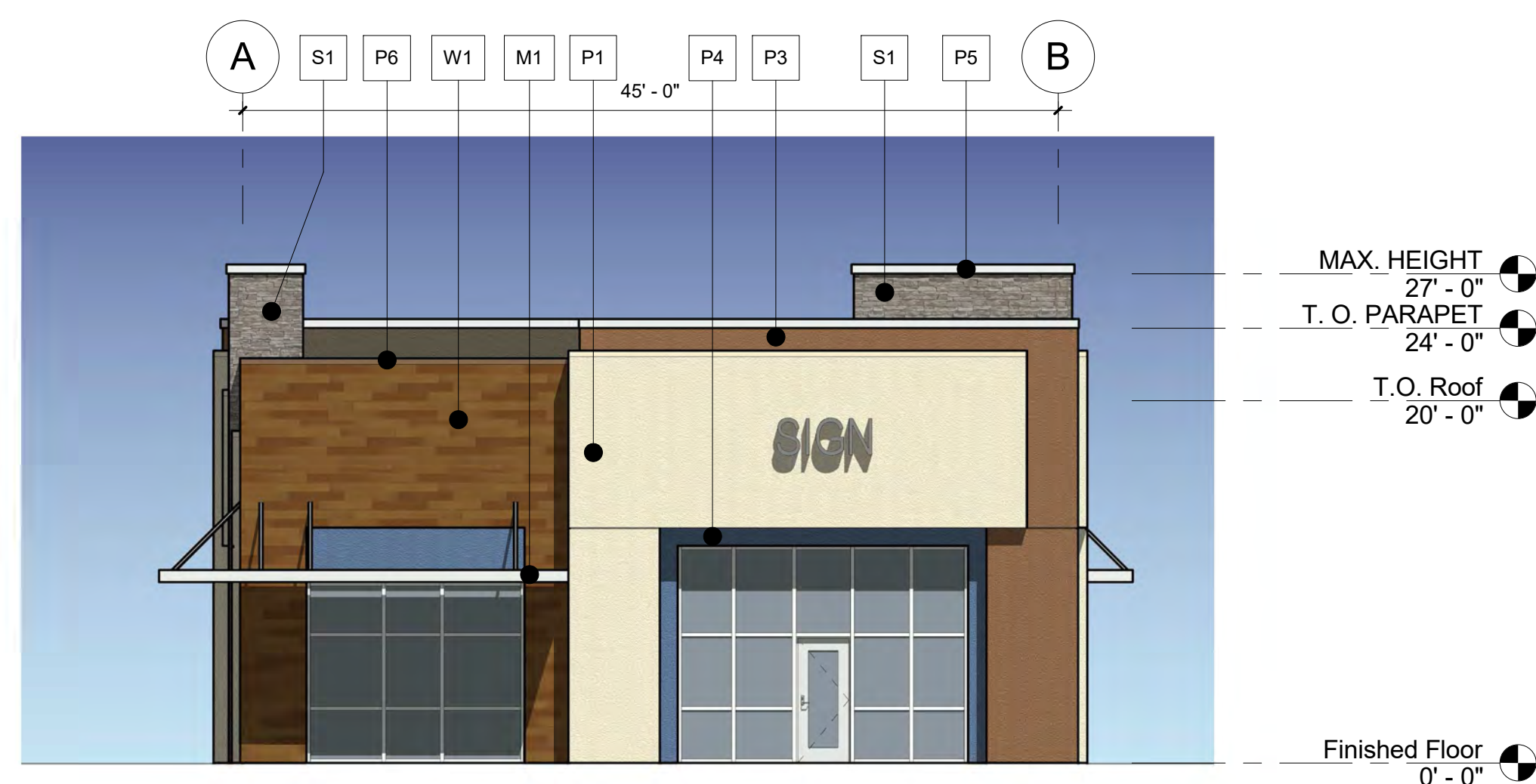
2 SECTION
1/8" = 1'-0"



1 ROOF PLAN
1/8" = 1'-0"



4 NORTH ELEVATION
1/8" = 1'-0"



2 WEST ELEVATION
1/8" = 1'-0"



3 EAST ELEVATION
1/8" = 1'-0"



1 SOUTH ELEVATION
1/8" = 1'-0"

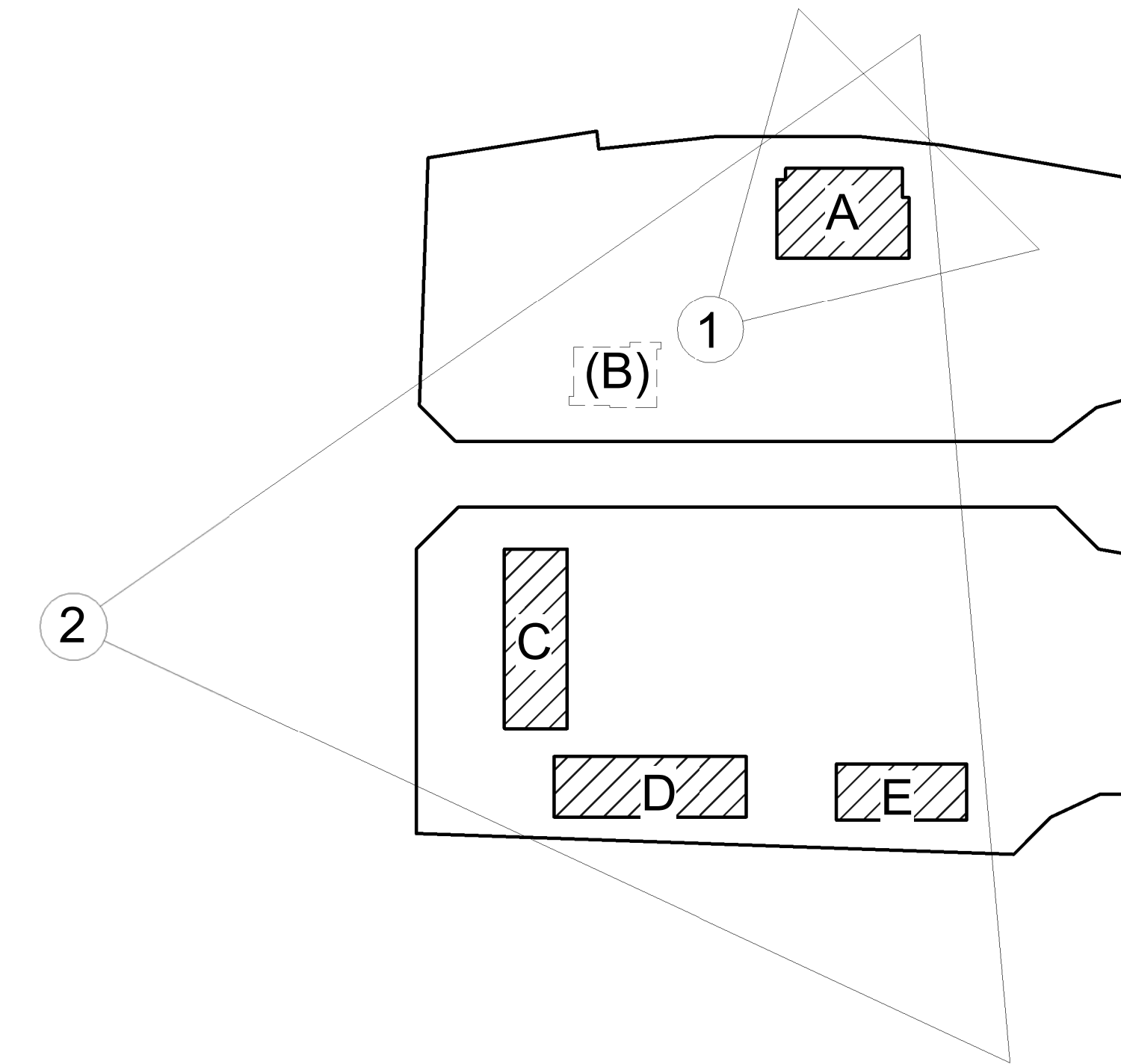
MATERIAL LEGEND

P1	BENJAMIN MOORE NATURAL CREAM	M1	METAL
P2	SHERWIN WILLIAMS QUIVER TAN	W1	PORCELAIN TILE ELEGANZA ANTICHO
P3	SHERWIN WILLIAMS UMBER RUST	S1	EL DORADO STONE
P4	SHERWIN WILLIAMS LUXE BLUE		
P5	COPING COLOR		
P6	COPING COLOR		



① BUILDING A

NOTE: SEE ORTHOGRAPHIC ELEVATIONS FOR MATERIAL CALLOUTS AND LEGEND. SEE PHYSICAL MATERIALS BOARD FOR ACCURATE COLOR RENDITIONS

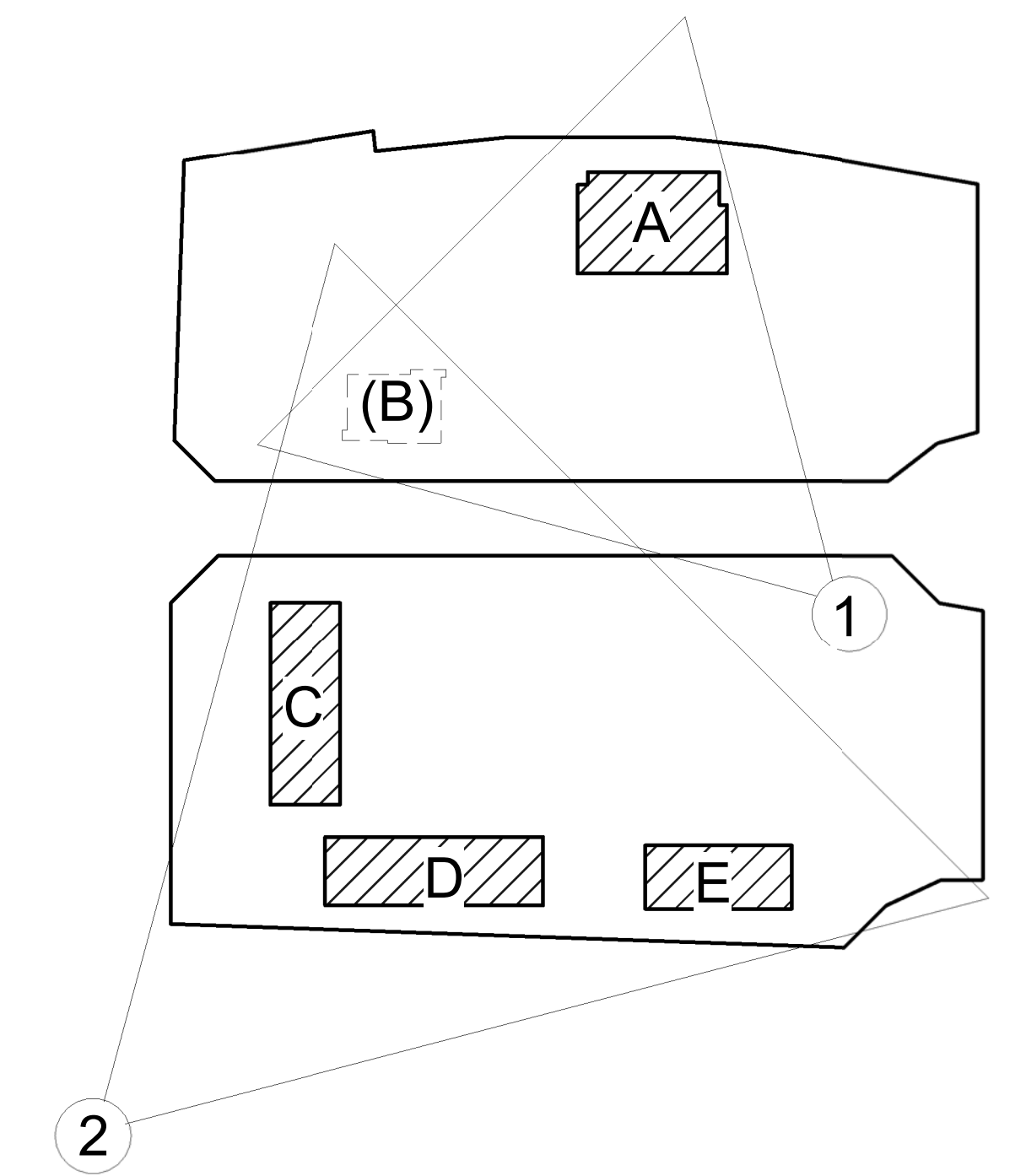


② BUILDINGS A, B, C & D



① BUILDINGS B & A

NOTE: SEE ORTHOGRAPHIC ELEVATIONS FOR MATERIAL CALLOUTS AND LEGEND. SEE PHYSICAL MATERIALS BOARD FOR ACCURATE COLOR RENDITIONS

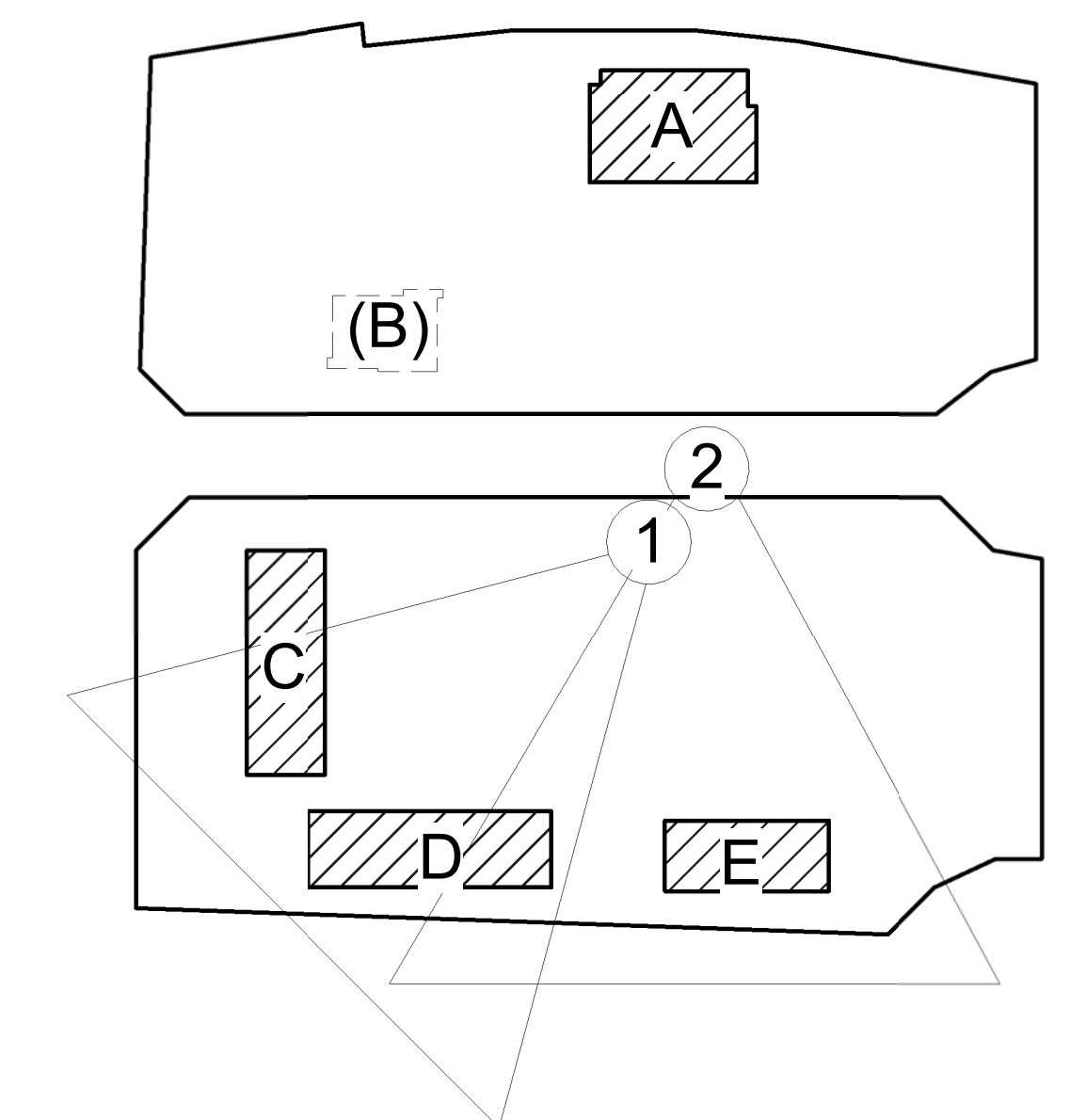


② BUILDINGS C, D & E



1 BUILDINGS D & C

NOTE: SEE ORTHOGRAPHIC ELEVATIONS FOR MATERIAL CALLOUTS AND LEGEND. SEE PHYSICAL MATERIALS BOARD FOR ACCURATE COLOR RENDITIONS



2 BUILDINGS E & D

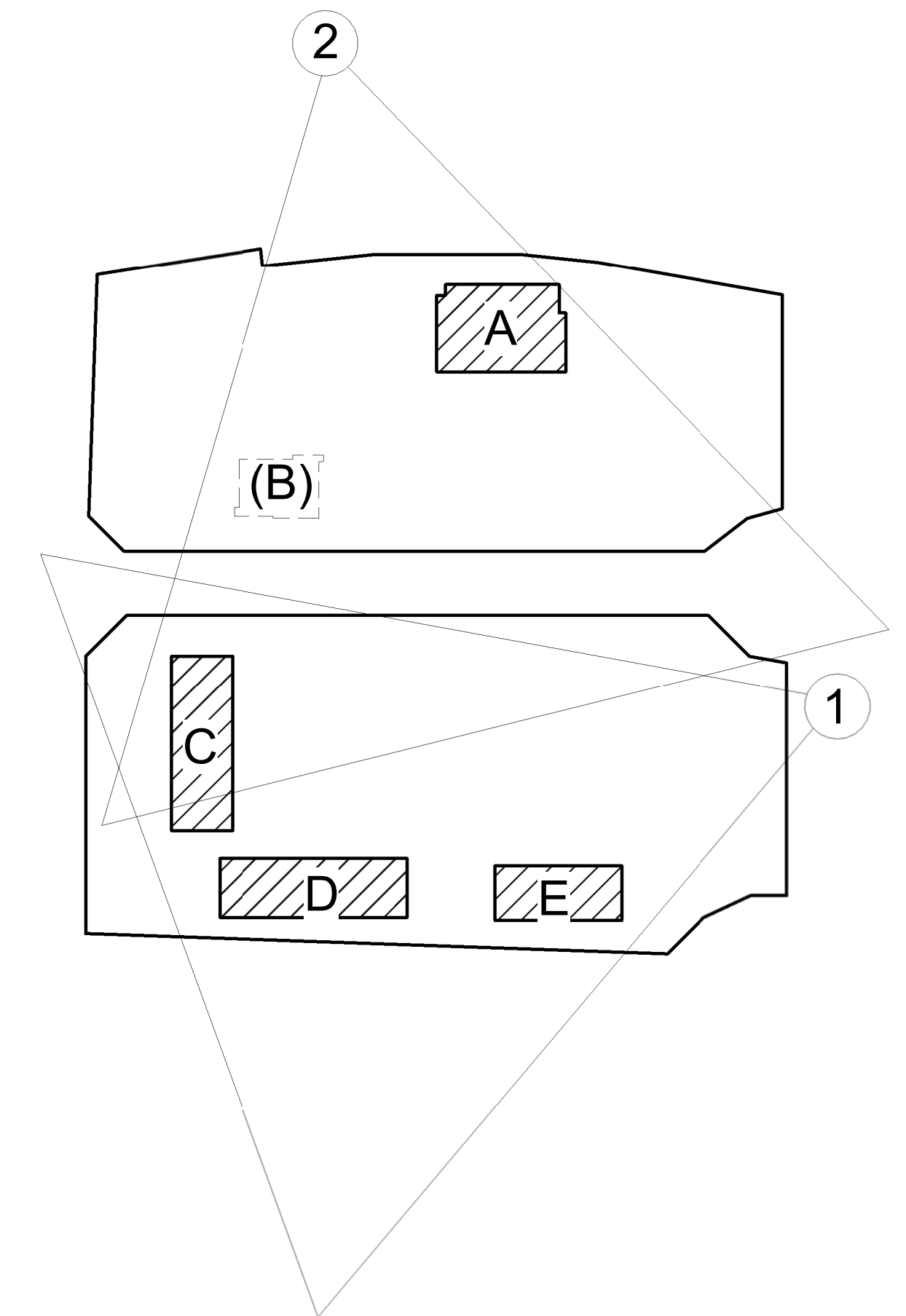


1 BUILDINGS E, D & C

NOTE: SEE ORTHOGRAPHIC ELEVATIONS FOR MATERIAL CALLOUTS AND LEGEND. SEE PHYSICAL MATERIALS BOARD FOR ACCURATE COLOR RENDITIONS



2 BIRDSEYE VIEW FROM NORTH



FREEDOM POINT PARCEL 49 RENDERINGS 4

PARCELS 1, 2 & 5 17002 05/19/17

1478 STONE POINT DRIVE SUITE 350 ROSEVILLE, CA 95661 T | 916 782 7200 borgesarch.com